

NEW GALV. STL. 3'-0" x 5'-0" INSUL. ROOF HATCH AS MANUF. BY PRECISION STAIR CORP. PROVIDE MODEL NO. P58BH. ALL HARDWARE, LATCHES, FLASHING, AND FASTENERS SHALL BE SUPPLIED BY HATCH INSTALLER.

CONT. PRES. TRDT. 2x2x6 TOP FLT. TYP.

NEW SUPPORT WALL. 2x6'S @ 16" O.C. ANCHOR TO FLOOR @ 16" O.C.

5/8" EXT. GRADE FLYC. BOTH SIDES

6" FOIL FACED BATT INSULATION (TYP.)

NEW 2x2x8 WOOD TOP FLT. CUT TO FIT

NEW 2x2x10 SUPPORT BEAM

NEW BEAM SUPPORT BRACKET. SEE DET. 3, THIS SHEET.

EXISTING STEEL LADDER. CUT BACK AS REQUIRED FOR NEW ROOF HATCH. ALL CUT EDGES SHALL BE GRIND SMOOTH AND PAINTED.

2x6 WOOD PLATE. ANCHOR TO CONC. CURB AS REQUIRED.

EXISTING CONCRETE CURB TO REMAIN.

NEW BEAM SUPPORT BRACKET. SIMPSON STRONG TIE MODEL NO. TH4218-2. FASTEN TO CONC. CURB W/ 1/4" DIA. EXPAN. BOLTS.

THRU-BOLT (2) 2x10 W.D. BEAM AS REQUIRED

1/4" GALV. STL. PLATE BRACKET. WELD ALL CONNECTIONS.

(2) 2x10 W.D. BEAM AND 2x6 W.D. PLATE BEYOND.

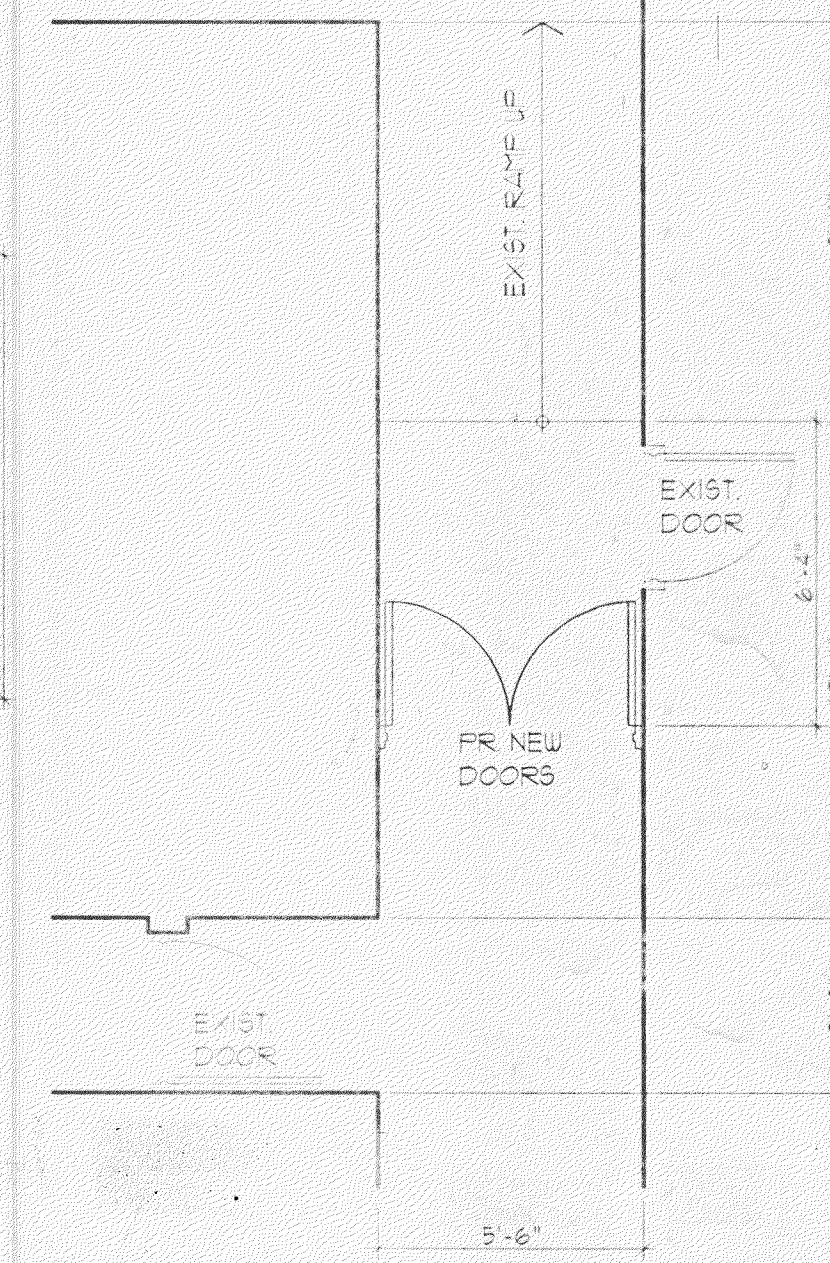
5/8" x 5/16" GALV. STL. ANGLE. WELD TO BRACKET.

2-3/8" x 5/16" EXPAN. BOLTS AND WASHERS.

1/4" GALV. STL. PLATE BRACKET. BOLT TO WALL AS REQUIRED.

SIDE VIEW

FRONTAL VIEW

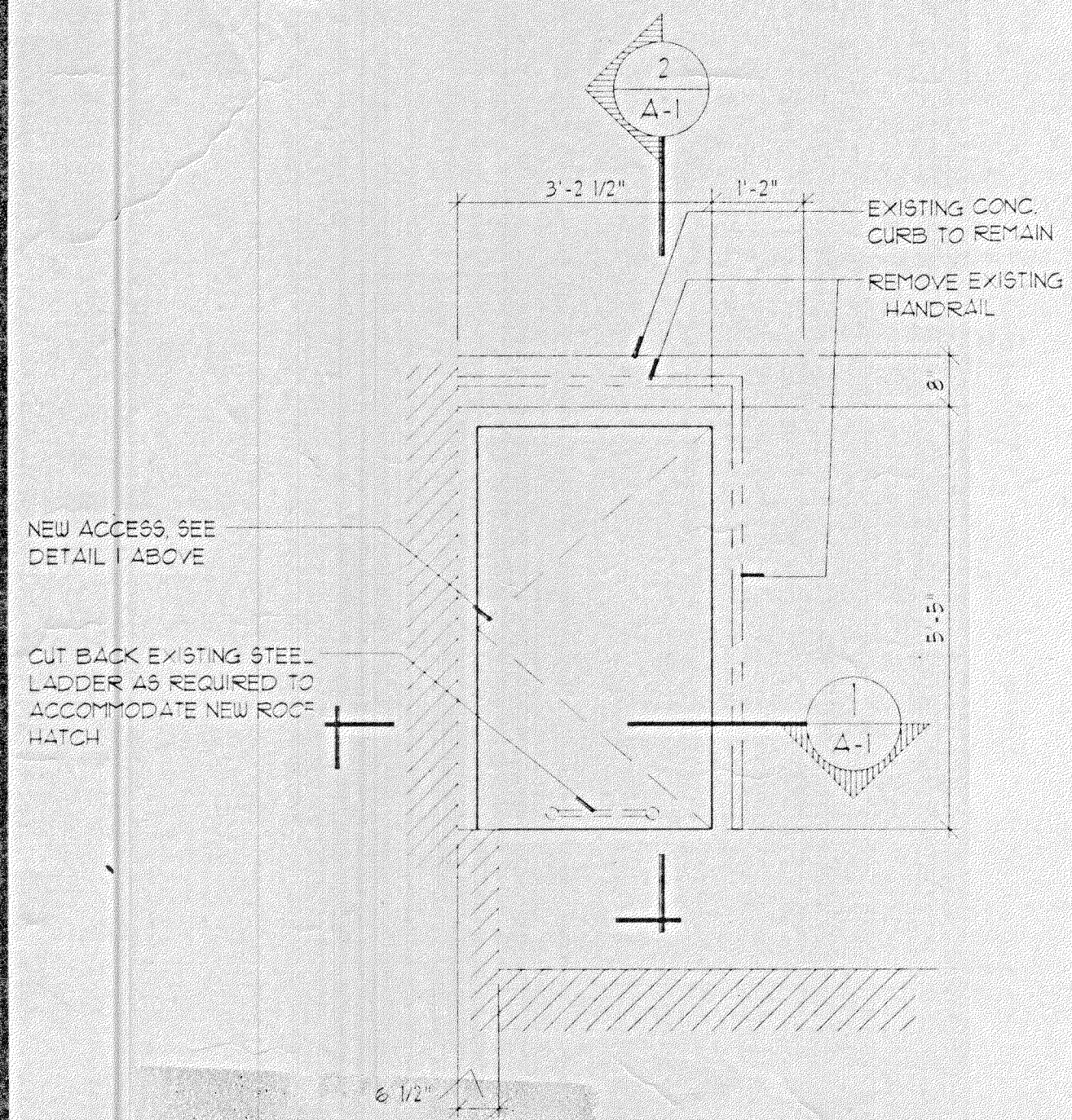


4 PART BASEMENT CORRIDOR PLAN
SCALE: 1/4" = 1'-0"

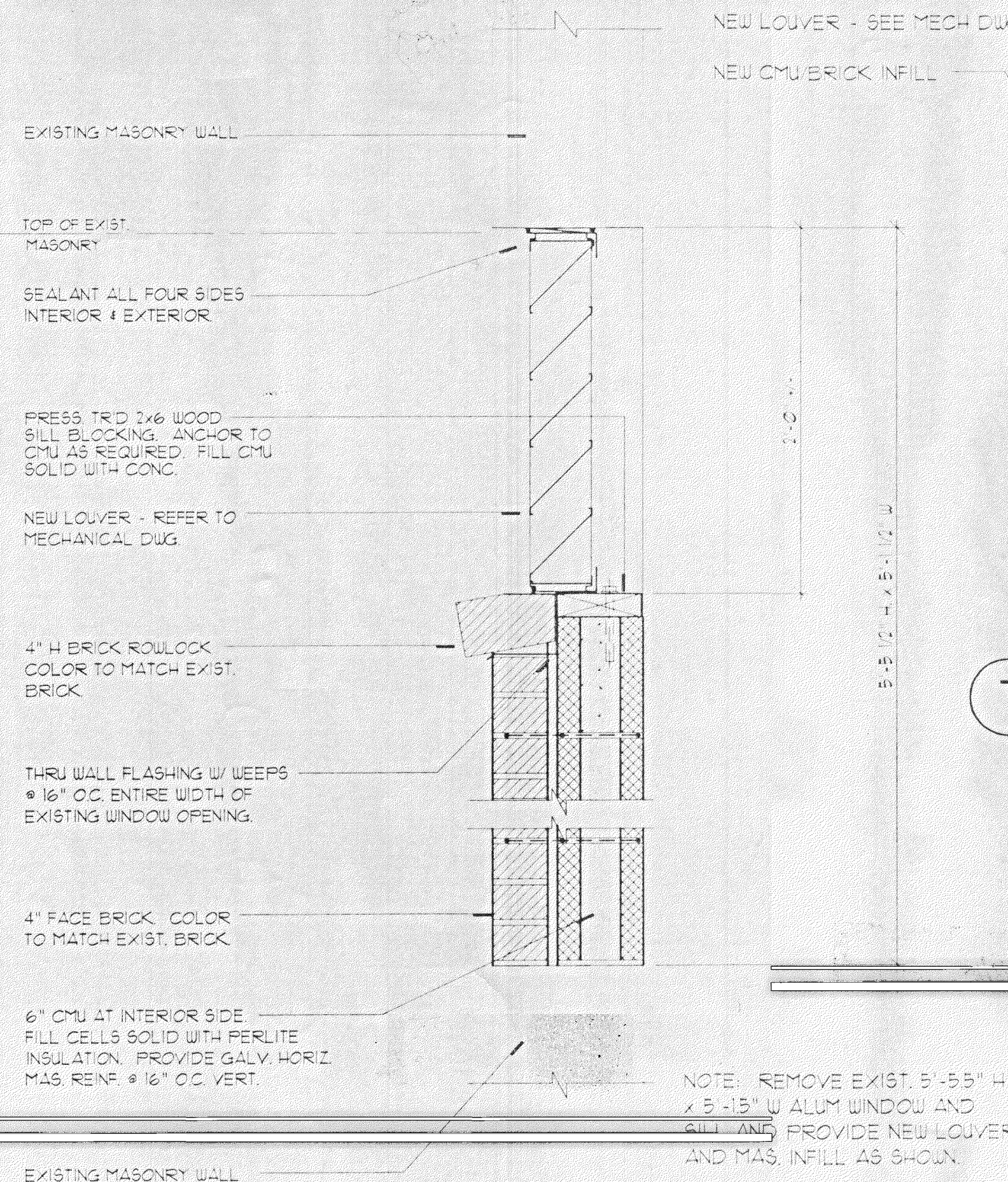
1 SECTION THRU HATCH
SCALE: 1/12" = 1'-0"

2 SECTION THRU HATCH
SCALE: 1/12" = 1'-0"

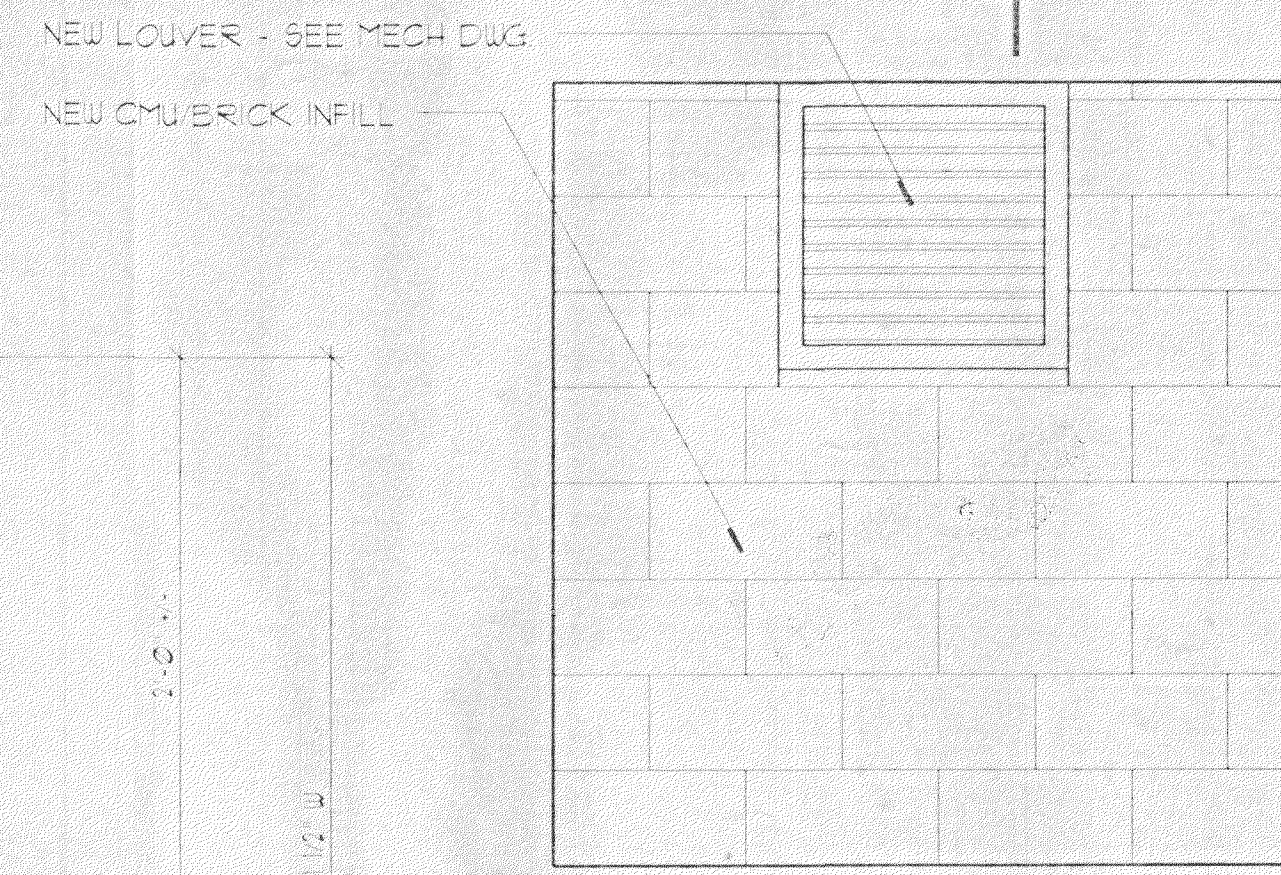
3 BEAM SUPPORT BRACKET
SCALE: 3/4" = 1'-0"



5 EXISTING/DEMOLITION PLAN
SCALE: 1/12" = 1'-0"



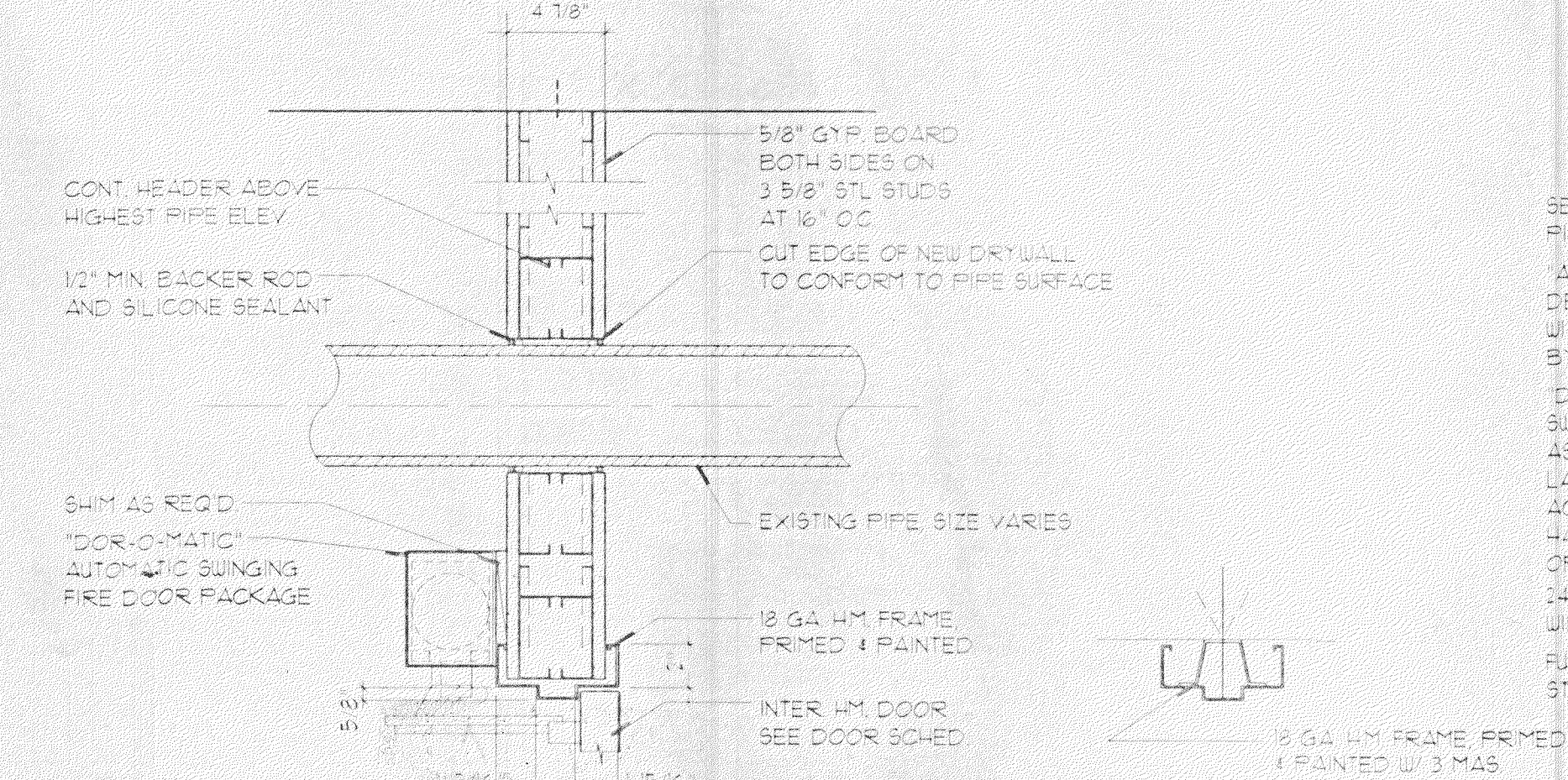
6 SECTION THRU MASONRY FILLED OPENING
SCALE: 1/12" = 1'-0"



7 ELEV. OF MAS. FILLED OPEN'G
SCALE: 3/4" = 1'-0"

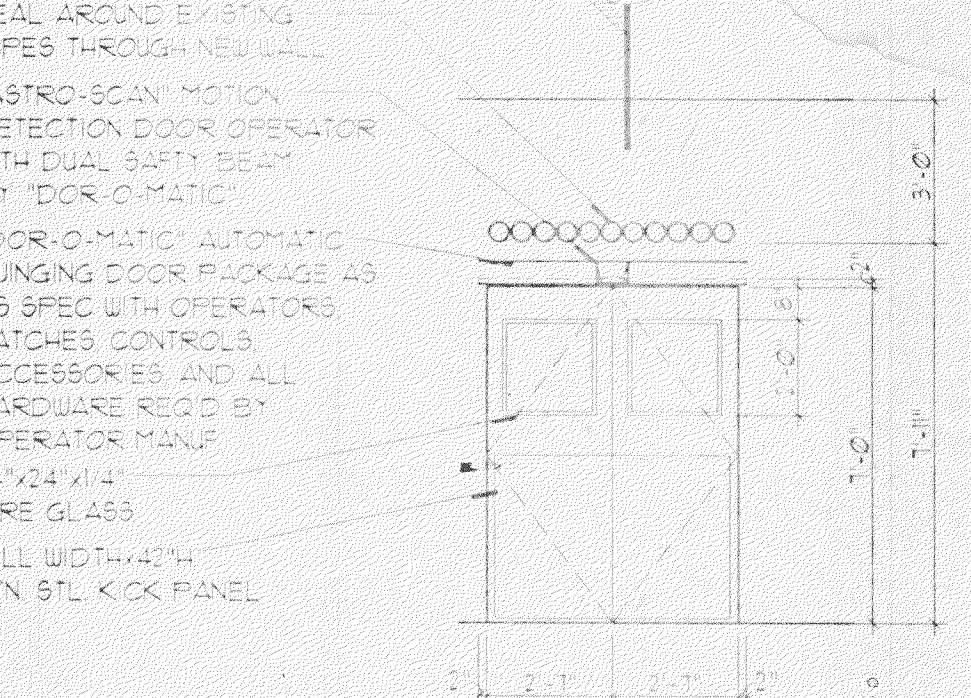
- HARDWARE**
- 6 ea. HINGES, #3B1133 45 X 46 FIN. 630 BY STANLEY HARDWARE
 - 1 SET GASKET #550 X L.R. CO. OR BLACK BY NATIONAL GUARD PRODUCTS, INC.
 - 4 EA. KICKPLATES 1945 X 1235 FIN. 630
 - 1 SET PERIMETER SEALS 5030 X L.R. COLOR BLACK
 - 3 EA. DOOR PULLS RM 101-101 X 670 X TBC X MTG-10630 BY ROCKWOOD

- 1. PROVIDE AUTOMATIC SWINGING ENTRANCE DOORS PRODUCED BY SINGLE MANUFACTURER WITH NOT LESS THAN 5 YEARS SUCCESSFUL EXPERIENCE IN THE FABRICATION OF DOORS OF THE TYPE AND QUALITY REQUIRED.
- 2. COMPLY WITH THE APPLICABLE PROVISIONS OF ALL CODES, STANDARDS AND SPECIFICATIONS INCLUDING BUT NOT LIMITED TO ANOTHER TO APPLICABLE SECTION 5.02.1.1.
- 3. PROVIDE TWO MICRO-WAVE SCANNER CONTROL SYSTEM, ONE EACH SIDE. SYSTEM SHALL BE SELF CONTAINED COMPOSED OF MICRO-WAVE SCANNER TO OPERATE OPERATOR MICRO-WAVE PRESENCE SENSOR TO KEEP DOOR OPEN SENSING DEVICE SHALL BE ADJUSTIBLE TO PROVIDE DETECTION PATTERNS AND SENSITIVITY EQUIVALENT TO THOSE REQUIRED TO MATCH.
- 4. PROVIDE HOUSING FOR SENSING DEVICES WITH FINISH MATCHING DOORS. PROVIDE MODEL # DOR-O-MATIC #466336 - SENSOR SWING WITH FULCRUM BOOST CLOSING. OPERATOR SHALL BE MOUNTED IN TRANSOM AREA ABOVE DOOR.
- 5. PROVIDE ELECTRO-MECHANICAL OPERATED UNITS MANUFACTURED BY DOR-O-MATIC DIVISION OF REFRIG. INDUSTRIES. PROVIDE SENSOR SWING SYSTEM.
- 6. PROVIDE OPERATORS THAT ARE FULLY ADJUSTIBLE WITHOUT REMOVAL OF THE DOORS, WITH ADJUSTMENTS FOR OPENING, CLOSING, OPEN, FULCRUM BOOST CLOSING, AND CHECKING SPEEDS AND FOR LENGTH OF TIME DOOR REMAINS OPEN.
- 7. PROVIDE OPERATORS OF SIZE RECOMMENDED BY DOOR MANUFACTURER.
- 8. PROVIDE OPERATORS THAT ARE FULLY ADJUSTIBLE WITHOUT REMOVAL OF THE DOORS, WITH ADJUSTMENTS FOR OPENING, CLOSING, OPEN, FULCRUM BOOST CLOSING, AND CHECKING SPEEDS AND FOR LENGTH OF TIME DOOR REMAINS OPEN.
- 9. PROVIDE ALL REQUIRED POWER AND CONTROL WIRING.
- 10. PROVIDE SELF-CONTAINED CONCEALED OVER-HEAD OPERATOR WITH POWER OPENING AND/OR POWER CLOSING AND SPEED CONTROL TO PROVIDE CHECKING IN BOTH CYCLES. PROVIDE FOR MANUAL OPERATION THAT REQUIRES LESS THAN 15 LBS. FORCE TO OPEN DOOR FOR USE WHEN POWER IS OFF.
- 11. EQUIP UNITS WITH HOLD-OPEN SWITCH, ARRANGED TO HOLD DOOR OPEN WITHOUT CONT. USE OF POWER.
- 12. EQUIP DOORS WITH POWER BOOST CLOSING MECHANISM.



8 HEAD DETAIL
SCALE: 1/12" = 1'-0"

9 JAMB DETAIL
SCALE: 1/12" = 1'-0"



10 ELEVATION
SCALE: 1/12" = 1'-0"

ARCHITECTURAL	
DEVON CONDOMINIUM	
MISCELLANEOUS PROJECTS	
WILMINGTON DELAWARE	
DR. BY: KJR	A-1
CK. BY: KJR	
APP. BY: KJR	
DATE: 3-28-95	

TETRA TECH, INC.
ARCHITECTS, ENGINEERS, SCIENTISTS

furlow associates, inc.
consulting engineers
1305 SOCIETY DRIVE CLAMMONT, DELAWARE 19703