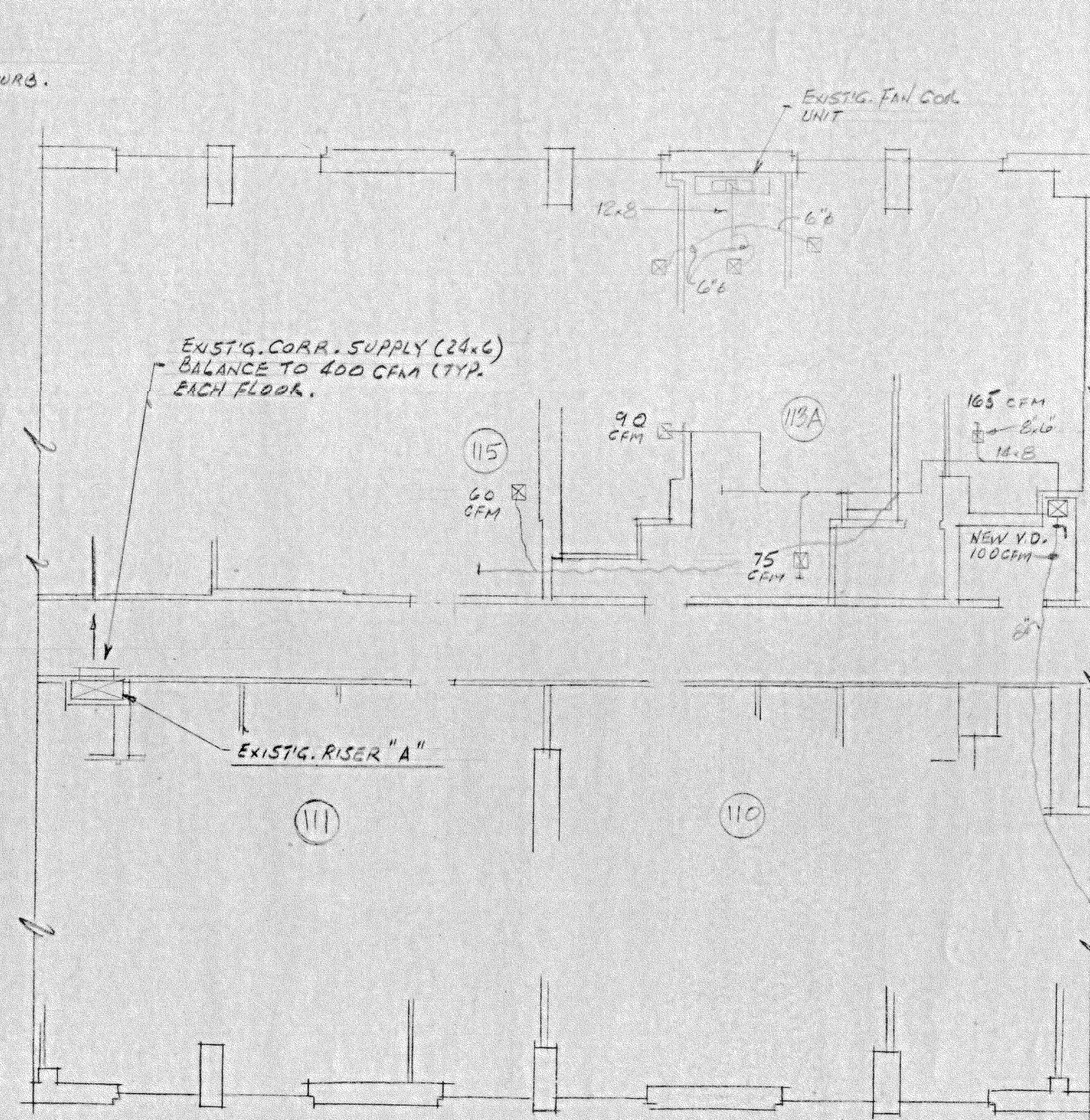
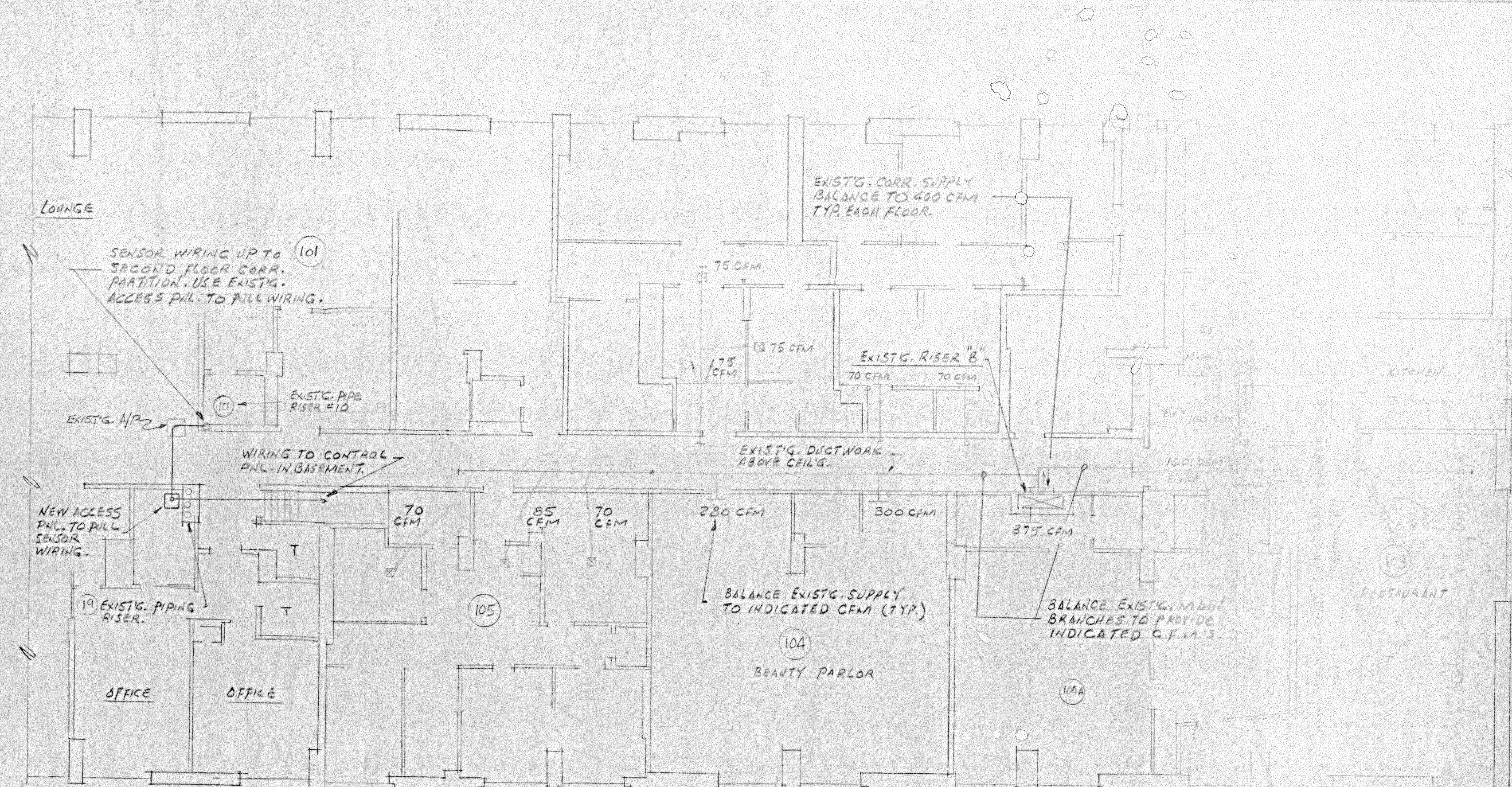


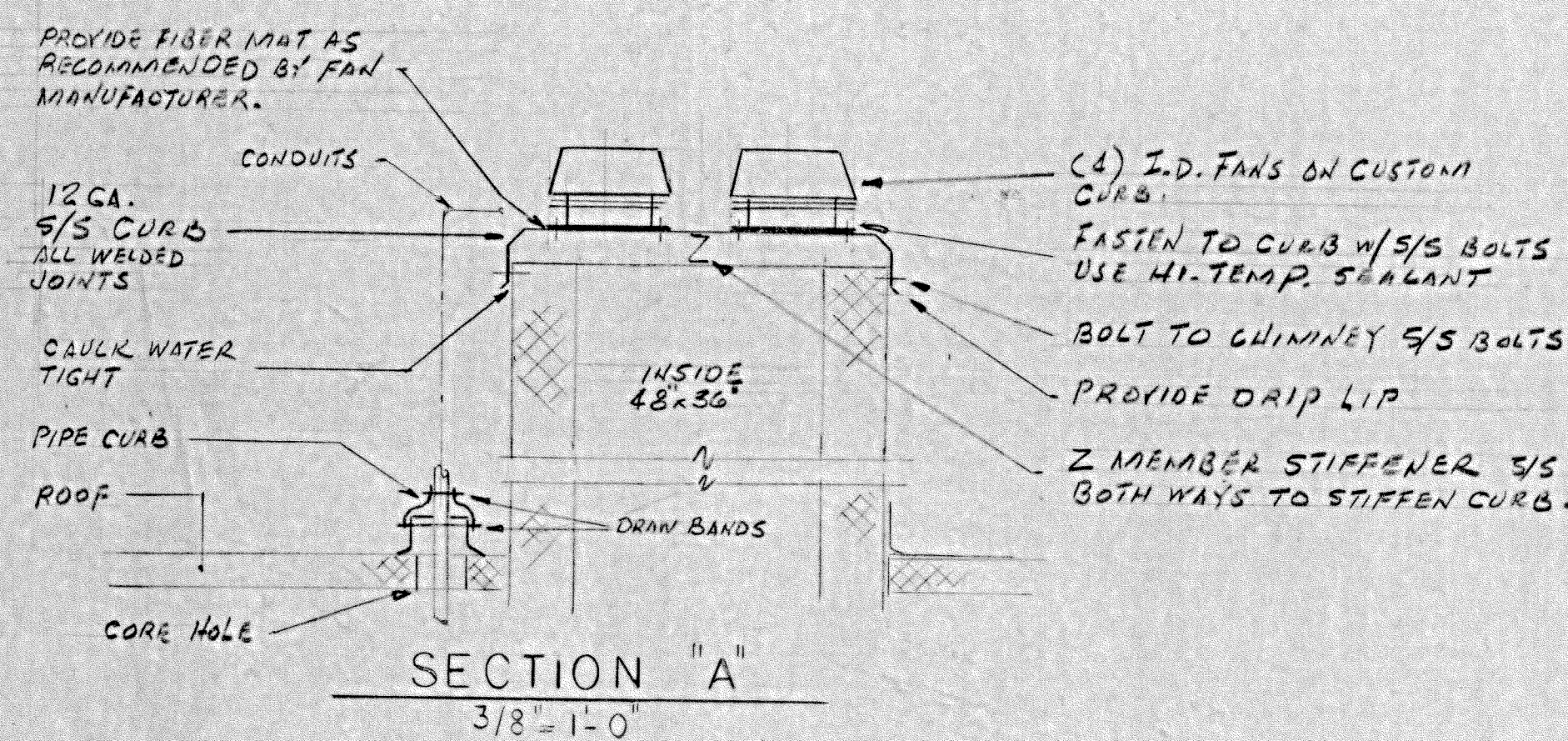
PARTIAL PENTHOUSE PLAN
1/8" = 1'-0"



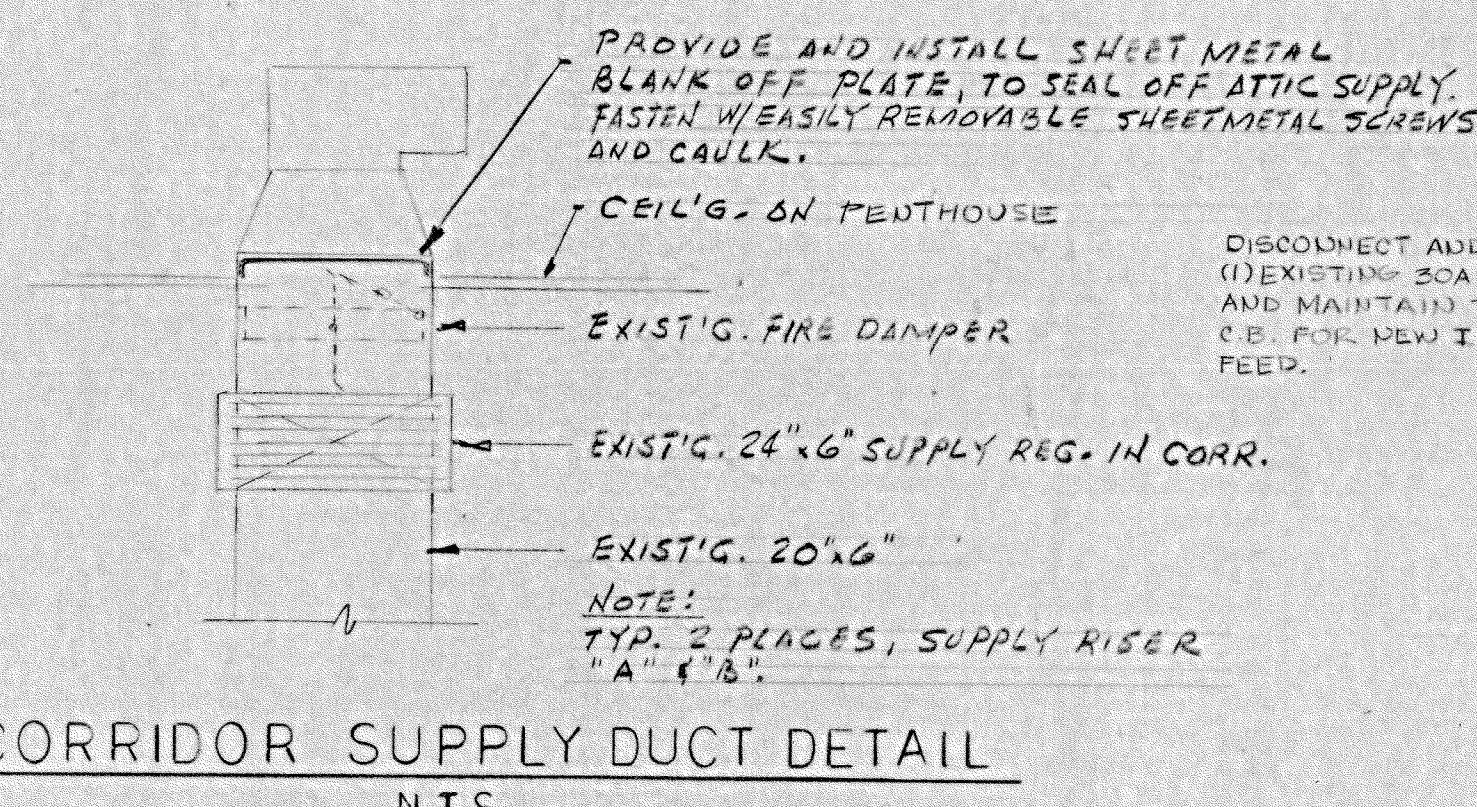
PARTIAL 1ST FLOOR PLAN
BALANCING WORK
1/8" = 1'-0"
WEST END



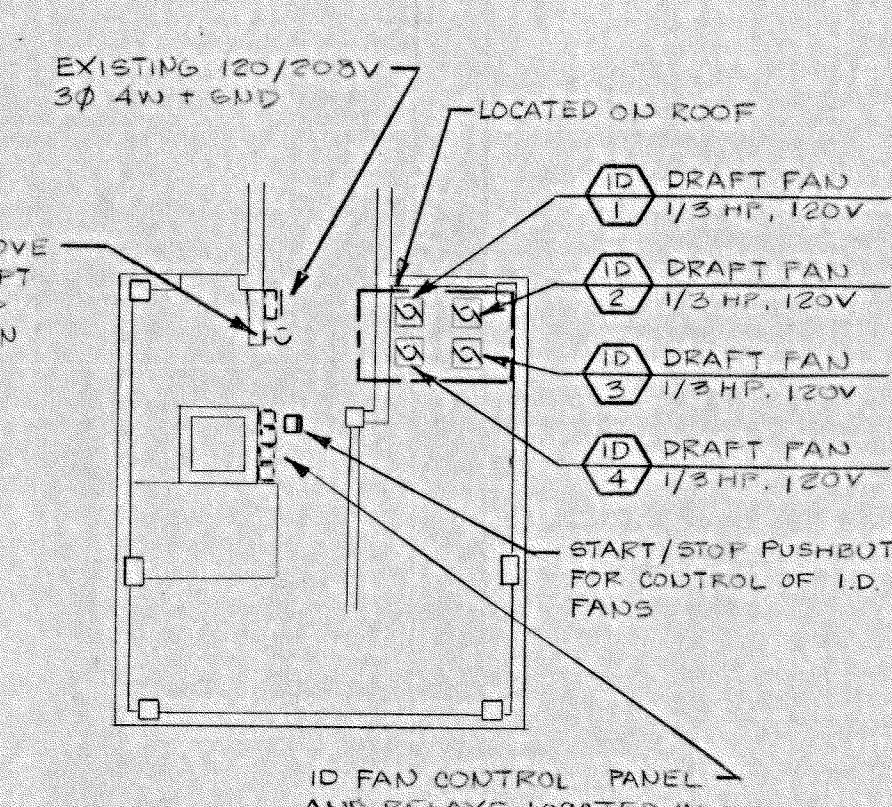
PARTIAL 1ST FLOOR PLAN
BALANCING WORK
1/8" = 1'-0"
EAST END



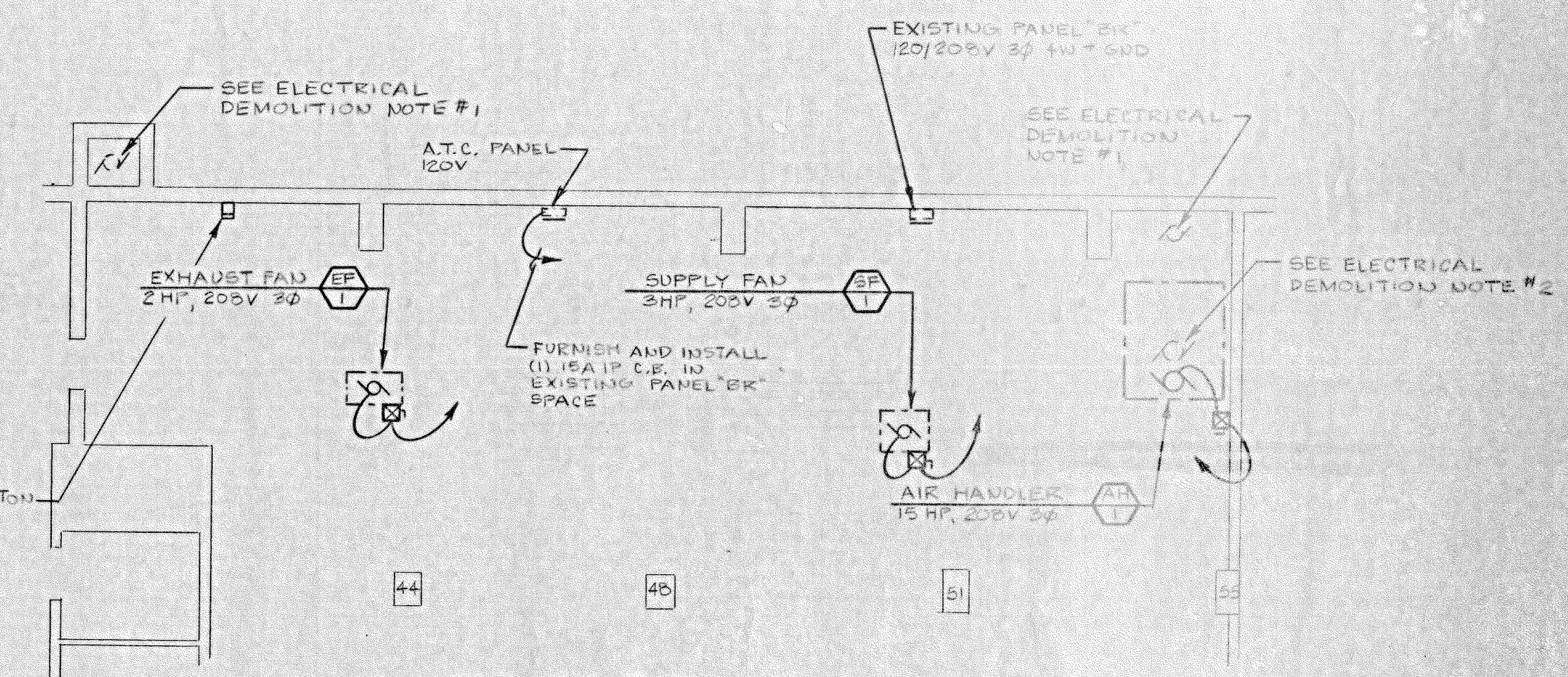
SECTION "A"
3/8" = 1'-0"



CORRIDOR SUPPLY DUCT DETAIL
NTS



PARTIAL PENTHOUSE
1/8" = 1'-0"



BOILER ROOM PLAN
1/8" = 1'-0"

MECHANICAL LEGEND

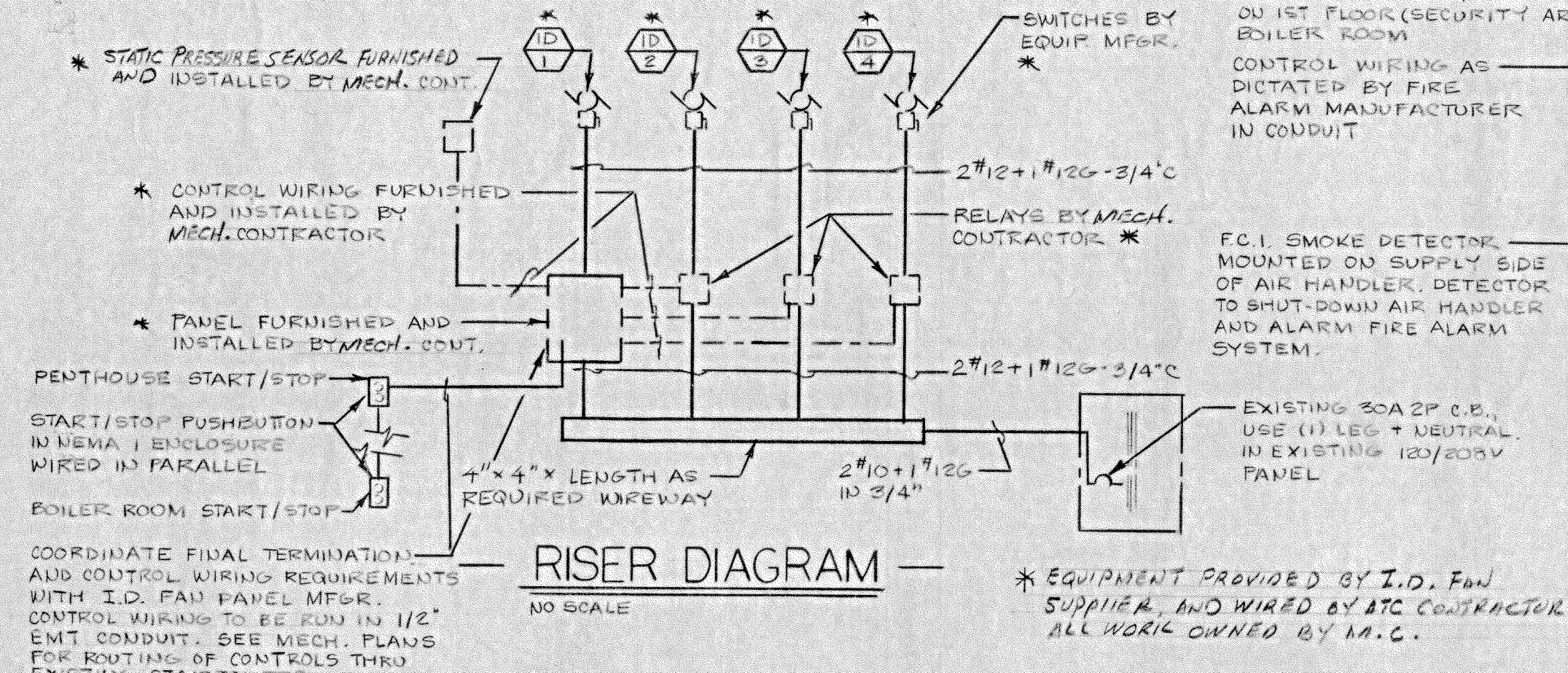
| | | | |
|--|--|--------|-------------------------------|
| | HOT/COOLED WATER SUPPLY | AH-# | AIR HANDLING UNIT |
| | HOT/COOLED WATER RETURN | S.A. | SUPPLY AIR |
| | COLD WATER MAKE UP | R.A. | RETURN AIR |
| | GATE VALVE | E.E. | EXHAUST FAN |
| | COMBINATION BALANCING & SHUT-OFF VALVE | S.F. | SUPPLY FAN |
| | UNION | ATC | AUTOMATIC TEMPERATURE CONTROL |
| | CHECK VALVE | CC | CONTROL CONDUIT |
| | THERMOMETER | CW | COLD WATER MAKE UP |
| | REDUCER | EXH | EXHAUST |
| | PRESSURE GAUGE & COCK | O.A. | OUTSIDE AIR |
| | VOLUME DAMPER IN DUCT | HWS | HOT WATER SUPPLY |
| | AUTOMATIC VALVE | HWR | HOT WATER RETURN |
| | AUTOMATIC 3-WAY VALVE | P/T | PRESSURE/TEMPERATURE |
| | BOILER | TYP. | TYPICAL |
| | SUPPLY DIFFUSER - # OF BLOWS | V.D. | VOLUME DAMPER |
| | | O.A. | OUTSIDE AIR |
| | | M.O.D. | MOTOR OPERATED DAMPER |

FAN SCHEDULE

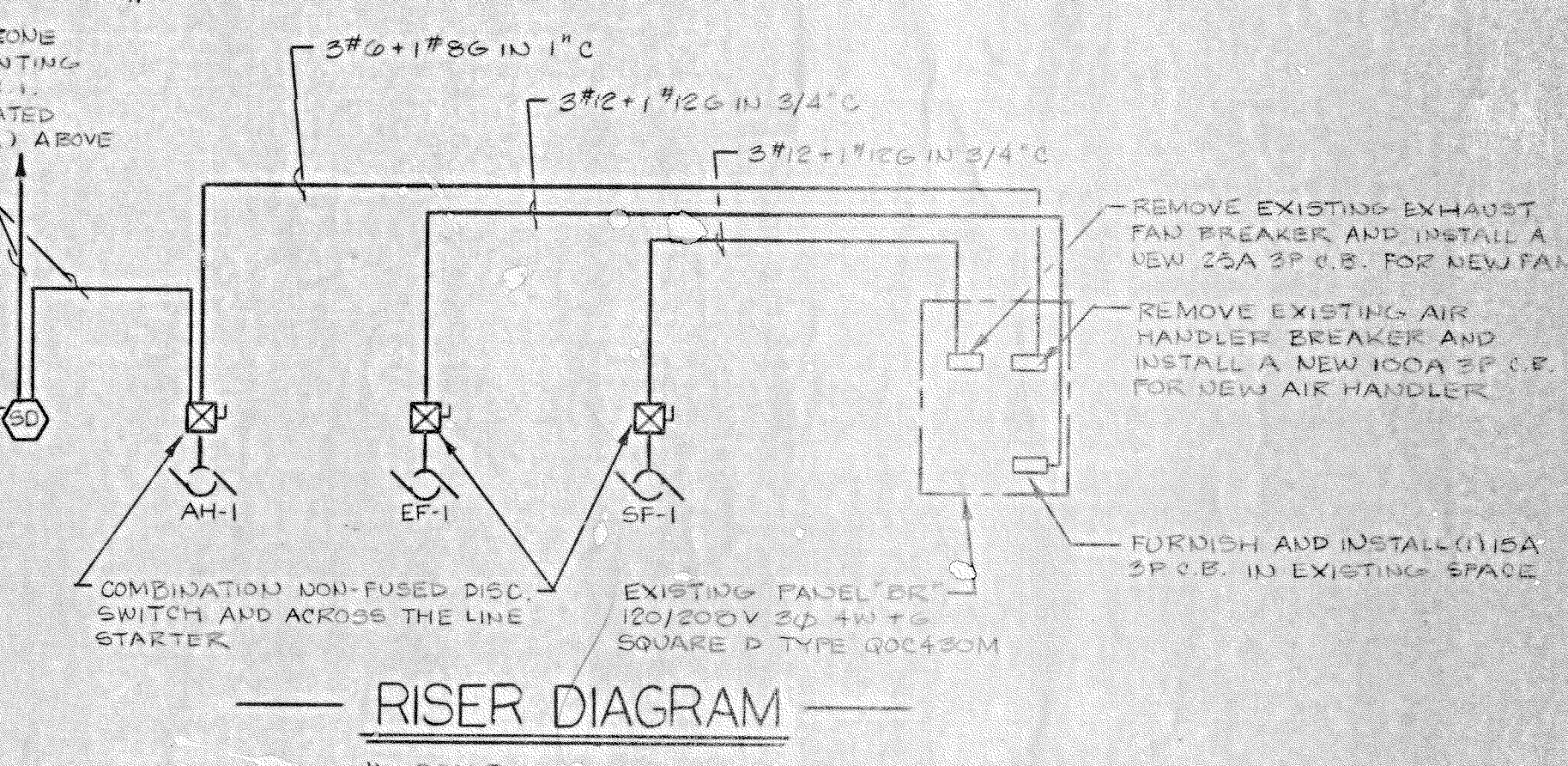
| EQUIP. NUMBER | DESCRIPTION | CFM | RPM | ESP" | HP | VOLTS PHASE | REMARKS |
|---------------|----------------------------------|------|------|---------------------|-------|-------------|-------------------------------------|
| SF-1 | INLINE CENTRIF. FAN | 4000 | 1380 | 1.5 | 3 | 208V 3Ø | BELT DRIVE PENN VENT MODEL SX 2055A |
| EF-1 | INLINE CENTRIF. FAN | 3500 | 1075 | 0.875" | 2 | 208V 3Ø | BELT DRIVE PENN VENT MODEL SX 2055A |
| 0-1,2,3,4 | INDUCED DRAFT FAN EXHAUST "RS16" | 1200 | 1600 | MAX. 1/3 HP 5" W.C. | 4 AMP | 120V 1Ø | PROVIDE PRESSURE REG. AND SENSOR. |

HOT WATER DUCT COIL

| EQUIP. NUMBER | DESCRIPTION | GPM | EWL | MBH | EAT | LAT | CFM | ADD. | WPD |
|---------------|--------------------------------|------|-----|-------|-----|-----|------|------|------|
| (DH) | FLANGED HOT WATER HEATING COIL | 23.0 | 180 | 345.6 | 0' | 80' | 4000 | 25' | 3.14 |



RISER DIAGRAM
NO SCALE



RISER DIAGRAM
NO SCALE

ELECTRICAL DEMOLITION NOTES:

1. ELECTRICAL CONTRACTOR TO DISCONNECT AND REMOVE EXISTING EXHAUST FAN ELECTRICAL SERVICE INCLUDING CONDUIT, WIRE, DISC. SWITCHES AND STARTERS. BREAKER TO BE REMOVED AND REPLACED WITH SIZE AS INDICATED FOR NEW WORK.
2. ELECTRICAL CONTRACTOR TO DISCONNECT AND REMOVE EXISTING AIR HANDLER ELECTRICAL SERVICE INCLUDING CONDUIT, WIRE, DISC. SWITCHES AND STARTERS. BREAKER TO BE REMOVED AND REPLACED WITH SIZE AS INDICATED FOR NEW WORK.

AIR HANDLING UNIT SCHEDULE

| EQUIP. NUMBER | CFM | % O.A. | ESP" | HP | RPM | VOLTS PHASE | COOLING | | | | HEAT | | | | REMARKS | | | | | | | |
|---------------|--------|--------|------|------|-----|-------------|-----------|-----------|-----|-----|------|------|-----|---------|---------|-----------|------|-----|------|------|-----|--|
| | | | | | | | TOTAL MBH | SENS. MBH | EAT | LAT | CFM | ADD. | WPD | REMARKS | | | | | | | | |
| AH-1 | 14,000 | 100% | 1.5" | 15.0 | 809 | 208V 3Ø | 1266 | 695.5 | 95' | 96' | 140 | 45' | 62' | 552 | 12.7' | HOT WATER | 1924 | 140 | 180' | 155' | 552 | |

* UNIT SUPPLIED WITH ONE (1) COIL, BUILDING SYSTEM IS DUAL TEMPERATURE.

Date Printed
MAR 11 1984

MECHANICAL / ELECTRICAL

DEVON CONDOMINIUM
H.V.A.C. MODIFICATIONS FME-1

WILMINGTON DELAWARE

furlow associates, inc.
consulting engineers
1306 SOCIETY DRIVE CLAYMONT, DELAWARE 19703